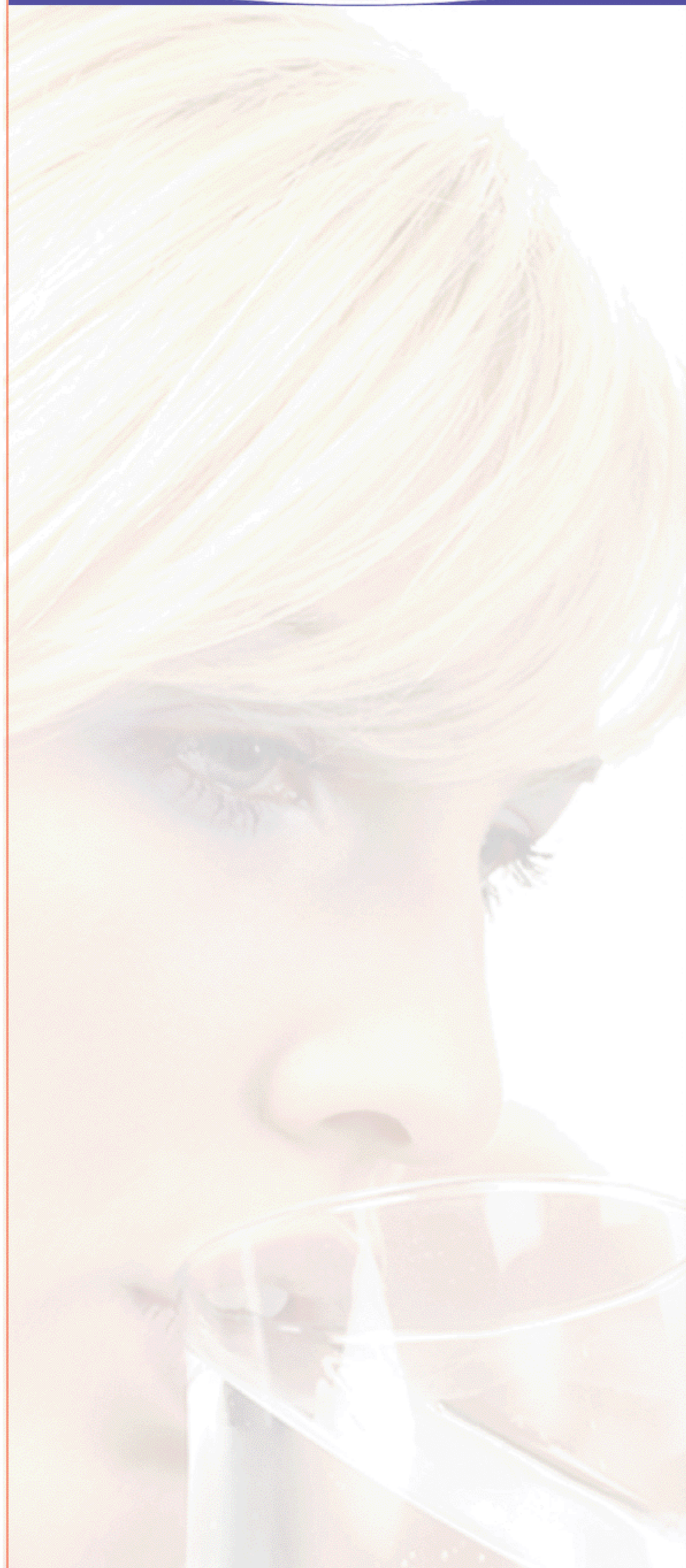




# CRYSTAL QUEST® Countertop Turbo Water Coolers



CRYSTAL QUEST® Countertop Turbo Bottleless Water Cooler Systems are advanced, attractive and durable. They are the perfect way to enjoy clean, crisp, filtered water without the hassle of dealing with heavy bottles and delivery schedules. Save money, space, and time with your own bottleless water cooler system.

Enjoy filtered water 24 hours a day. Installs easily. Plumbs directly to your cold water line for a continuous water supply.

### Optional:

- UltraViolet (UV)
- Flood prevention valve
- Ozonator
- Cup holder
- Cups



**Effectively removes hundreds of contaminants from water\***

### Water travels through 5 stages of filtration:

- **In stage 1**, water flows through one-micron filter pads (1 micron equals 1/25,000th of an inch), which remove suspended particles such as silt, sediment, cysts (Giardia, Cryptosporidium), sand, rust, dirt, and other undissolved matter.
- **In stage 2**, water passes through a granulated activated carbon (GAC) cartridge. GAC is universally recognized and widely used as an effective adsorbent for a wide variety of organic contaminants such as chlorine (99.9%), chemicals linked to cancer (THM's, benzene), pesticides, herbicides, insecticides, volatile organic compounds (VOCs), PCB's, MTBE's and hundreds of other chemical contaminants that may be present in water, which cause bad tastes and odors.
- **In stages 3 and 4**, water flows through a bed of media made of a special high-purity alloy blend of two dissimilar metals - copper and zinc (KDF-55D ® and KDF-85D ®). KDF is a major advancement in water treatment technology that works on the electro-chemical and spontaneous-oxidation-reduction (REDOX) principles. Chlorine is instantaneously and almost inexhaustibly oxidized.
- **In stage 5**, water flows through another one-micron filtration pad for further reduction of undesirable particles. The end result is a great reduction or the total elimination of a wide variety of contaminants.



**Optional add-on cartridges to filter:** fluoride, nitrates, arsenic and other water contaminants

### Features

- Built-in filtration system
- Easy to use
- Separate hot/cold power switch
- Automatic heating shut-off when hot water tank is empty or hot temperature reached
- Automatic float valve
- High efficiency sealed compressor cooling system
- Adjustable cold water
- Type 304 stainless steel hot and cold water tanks
- Easy access for service of filter system
- Easy to clean

### Specifications

- Weight: 37 lbs.
- Dimensions: (D) 13" x (W) 13" x (H) 18.5"
- Total reservoir capacity: 3.2 gallons
- Hot water tank temperature: 176-194°F
- Heating power: 500W
- Cooling power: 112W
- Hot water tank volume: 0.5 gal/heating
- Cold water tank volume: 1 gal per hour
- Cooling capacity: 1.95 gal per hour
- Voltage: 110V-120V 50/60H

This product is manufactured using ceramic balls that meet standard ANSI 61/42 WQA Seal Certified, GAC which meets standard ANSI 42 NSF Certified, KDF which meets standard ANSI 61/42 Certified, and pre and post one-micron filter pads which are from ISO 9001 approved manufacturers.

\* if present in the water

CRYSTAL QUEST® Copyright © 2006 Crystal Quest. All rights reserved.